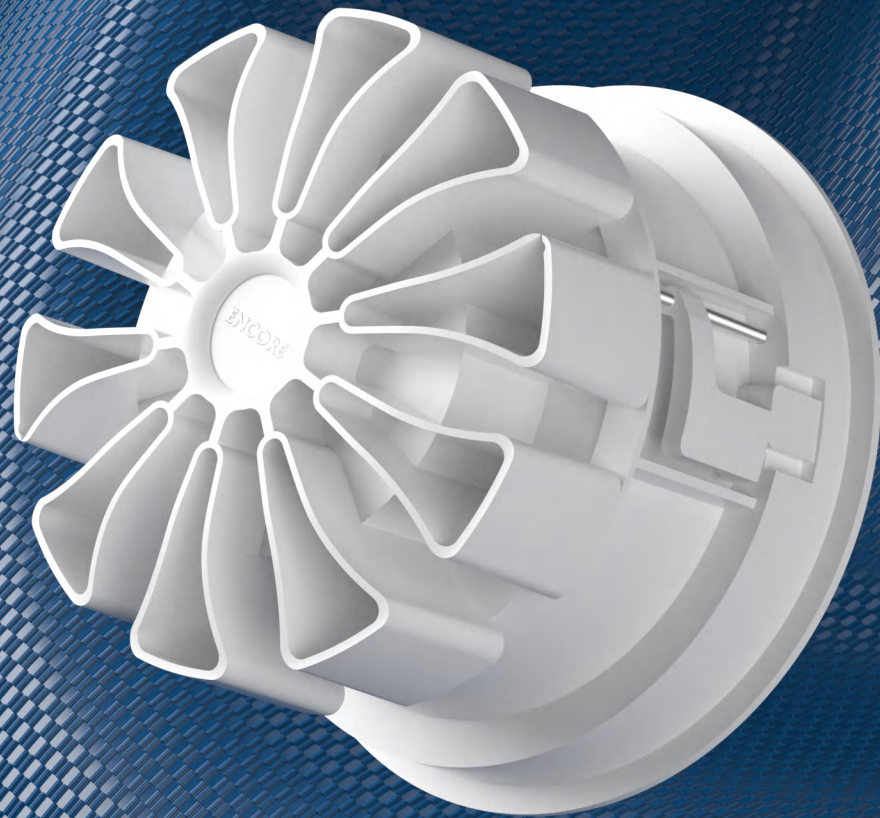


# GALAXY DOWNLIGHT

Galaxy is designed to be well adapt to high ceiling applications thanks to it's super high efficient thermal management and high light efficiency 110lm/W. Except for classic white color, Galaxy also support tunable white and CCT selectable with unparalleled quality light distribution, plus low glare UGR<16 design, Galaxy downlight delivers high-end, architectural-grade illumination precisely where you need it. Its tool-free, field-changeable reflector allow you to easily change how your spaces feel and perform with minimal labor, and IP54 ensure high-quality lighting even in harsh conditions.

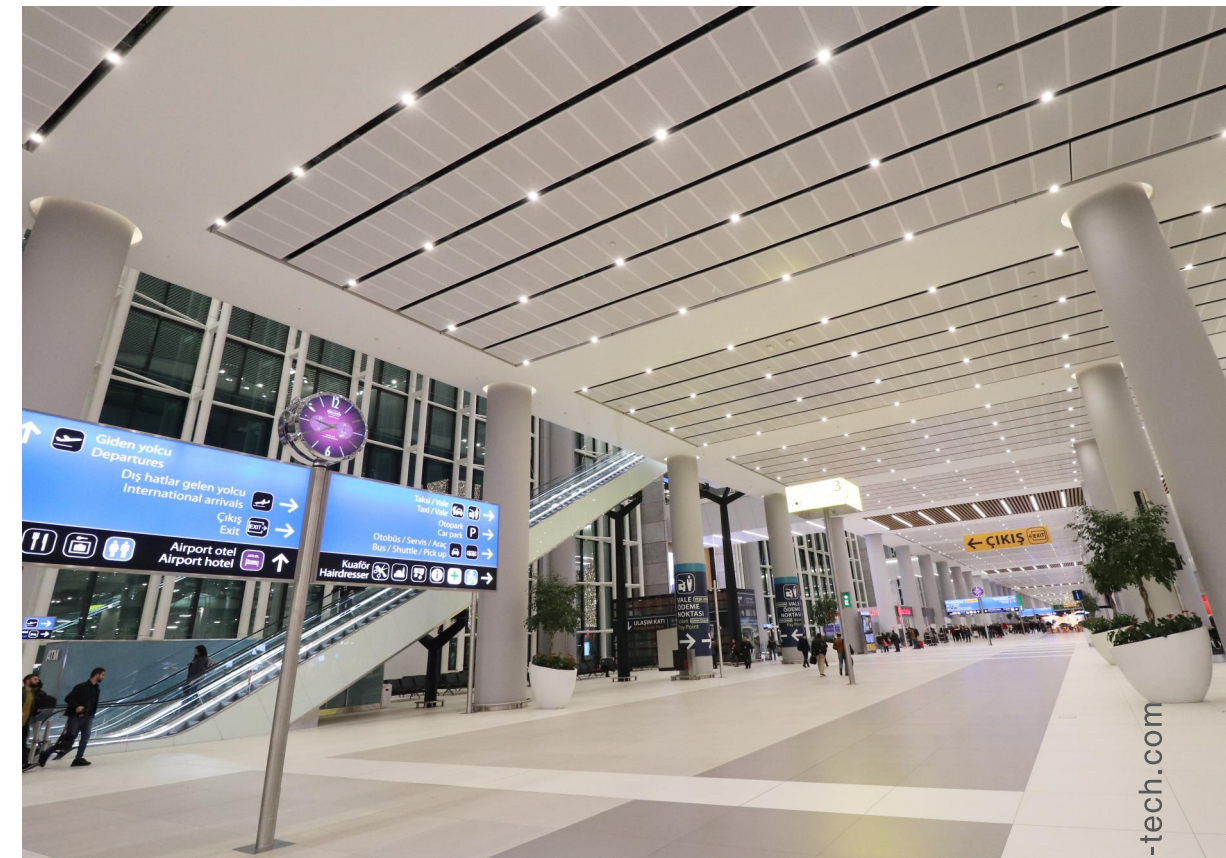






### High Ceiling Applications

With light output reaching 4,500 delivered lumens, Galaxy put long lasting, energy efficient, mercury-free high ceiling LED lighting options in play for shopping mall, airports, atriums, ballrooms, lobbies, and other spaces that require maximum lumen output.





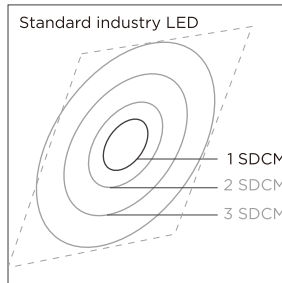
**LED Optical Technology**

ENCORE pays great attention to the quality of the raw materials, especially the key material LEDs, we only use the high-end LED brands, specifying the highest achievable technical parameters in terms of luminous flux, luminous efficacy, colour rendering, colour locus and consistent electrical characteristics for mass production, As a result, ENCORE luminaires provide excellent light quality with highly precise light distribution, free of color shifts and distortion.



2700K, 3000K, 3500K, 4000K and 5000K  
CRI80, CRI90, CRI95

Excellent optical emission uniformity and colorover angle consistency Exceptional long term color stability Superior thermal conductivity for uniform heat spreading Environmentally friendly: RoHS and REACH compliant.



**3 step MacAdam**

To ensure minimal colour deviation, only uses LEDs with an SDCM(Standard Deviation of Colour Matching)value of<3 steps.

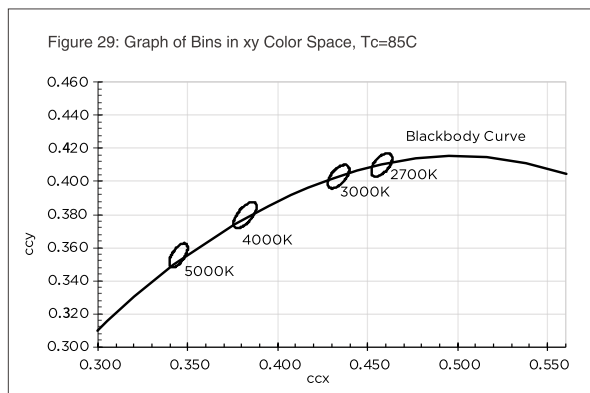
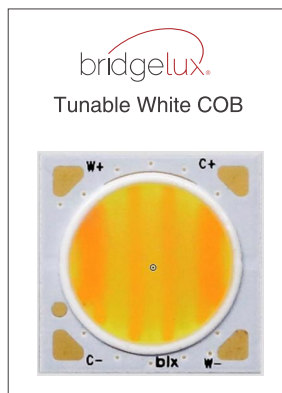


**Different Light Color Solutions**

Static White: 2700K, 3000K, 4000K, 5000K  
CCT Selectable: 3000K-4000K-5000K  
Tunable White: 2700K-5000K

**Tunable White**

Dimming range from 2700K to 5000K  
Uniform, high quality illumination  
Minimum 90 CRI and 95 CRI option  
More energy efficient than incandescent, halogen and fluorescent lamps  
Industry standardized dimensions.



**DALI Dimming**

Equipped with DALI intelligent dimming, support centralized control, individual control, group control, scene control to adjust the brightness, CCT, etc. By using it can help to save more energy and intelligently control the annual light exposure.



**0/1-10V Control Gear**

The versions with potentiometer enable you to adjust the luminous flux individually from 0% to 100% and achieve precise brightness control.



**TRIAC Dimming**

TRIAC dimming controls act as a high-speed switch and are used to control the amount of electrical energy passing to a bulb. A 'trigger' dictates what point the device starts to conduct the electricity.



**CCT Switch Dimming**

CCT Switch can provide you with the ability to change the colour temperature. Within one downlight, you have multiple colour temperatures that range from warm white to cool white.

**Light Dimmer**

There are more dimming options available. Such as DALI, 0-10V, TRIAC, CCT Switch, and so on.

**Optical Systems**

The optical systems for LED lighting are vastly different from those conventional luminaires. ENCORE designs and builds these systems internally to ensure a perfect match, thereby allowing their full potential to be exploited in terms of efficiency and light quality.

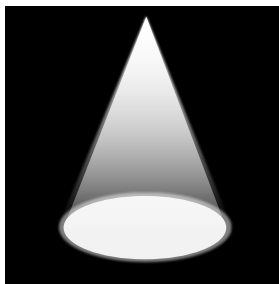


**Efficient Lens Technology**

Galaxy innovatively designed lens technology uses secondary lens and diffuser to achieve accurate light distribution, reducing spill light while providing uniform lighting effect.

**Precise Light Control**

With well-design optics and structure, the light is evenly and smoothly distributed with high light efficiency 110lm/W and precise beam angle.



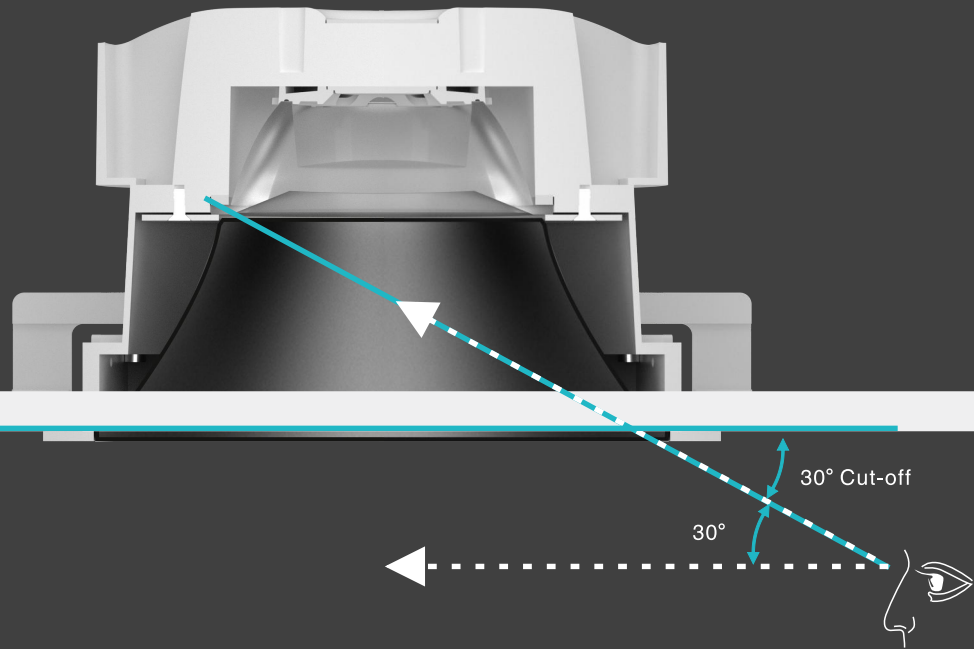
Optical Lens Technology



Other Technology

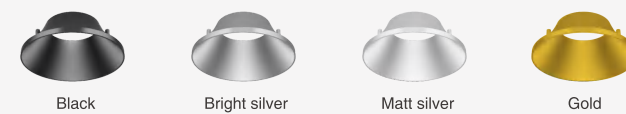
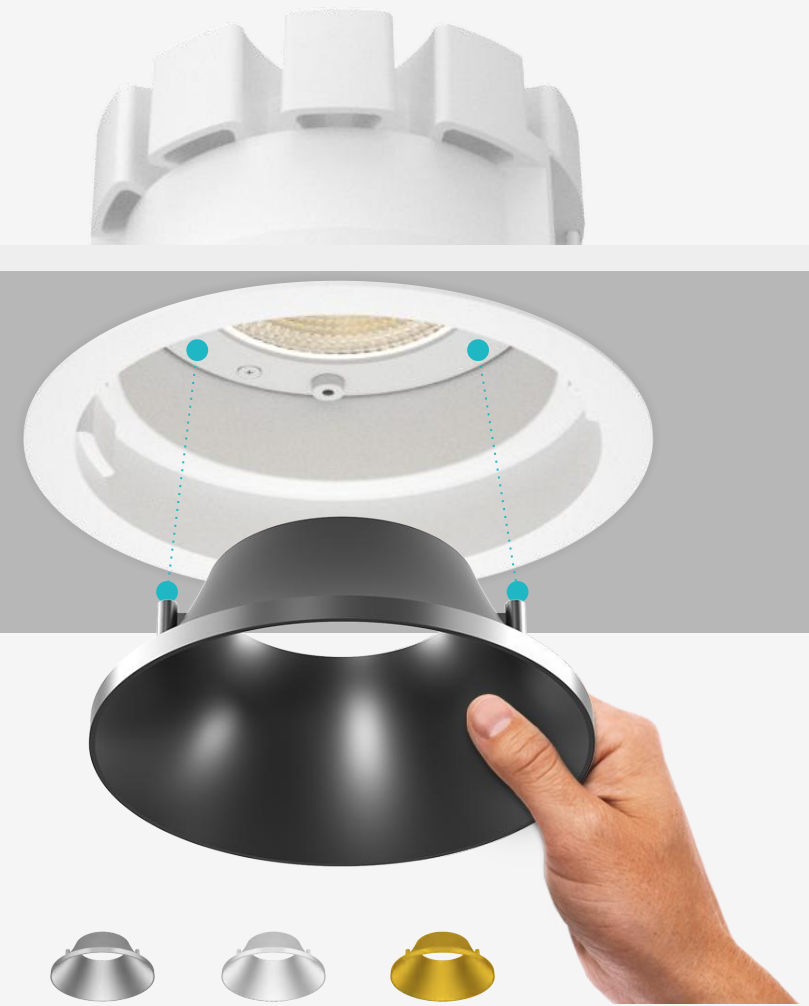






**UGR<16,  
Visual Comfort Without Compromise**

Galaxy was developed with the specifications of good glare control and high visual comfort with UGR<16.



**Magnetic Reflector Installations (tool-free)**

The magnetic design allow reflector to be swapped without positioning or any tool, allowing you to easily change how your spaces feel and perform with minimal labor. Multiple reflector colors to fit versatile design needs.

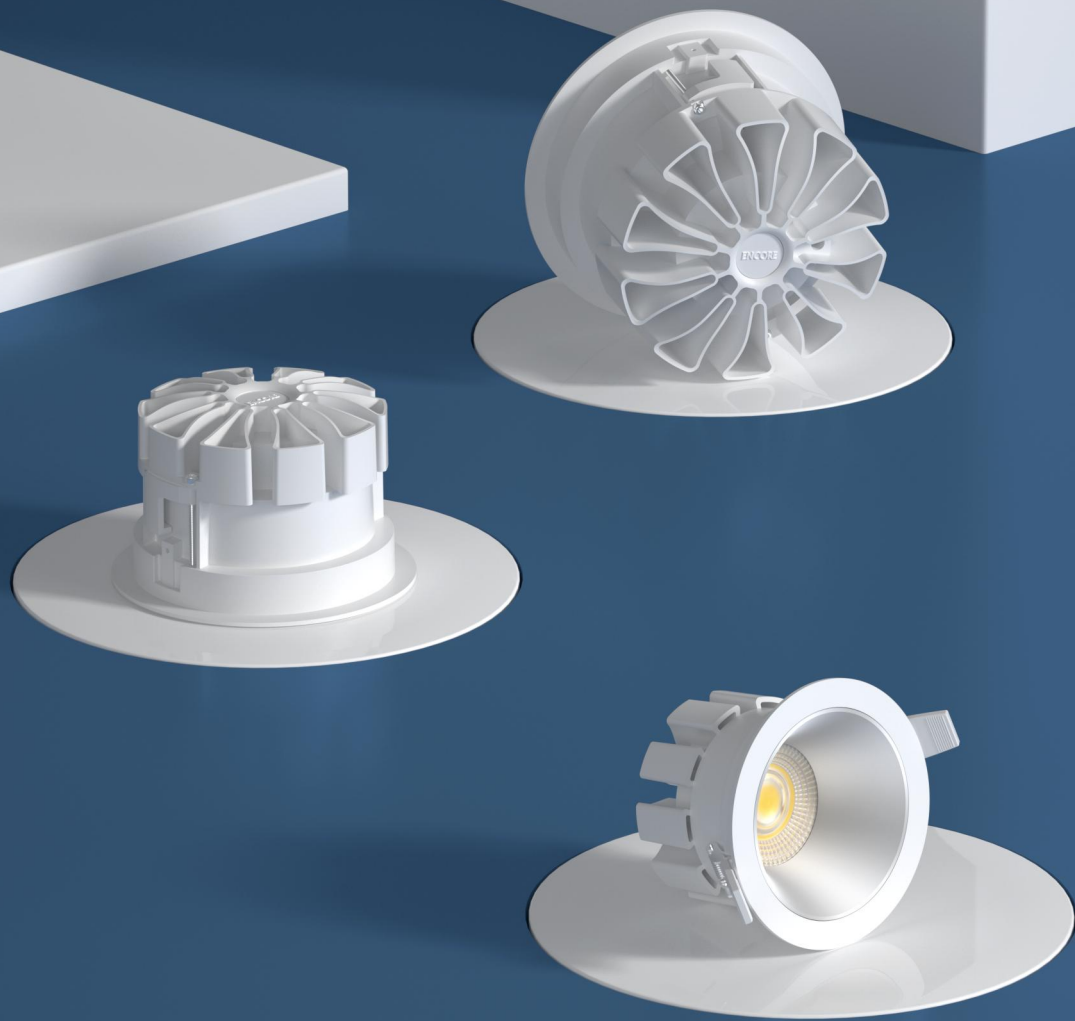




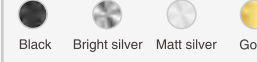

### General Lighting & Accent Lighting

Available in 24°, 38°, 60°, Galaxy can create more powerful and dramatic beam strengths with precise optics, or evenly illuminate the entire space with beautiful light.

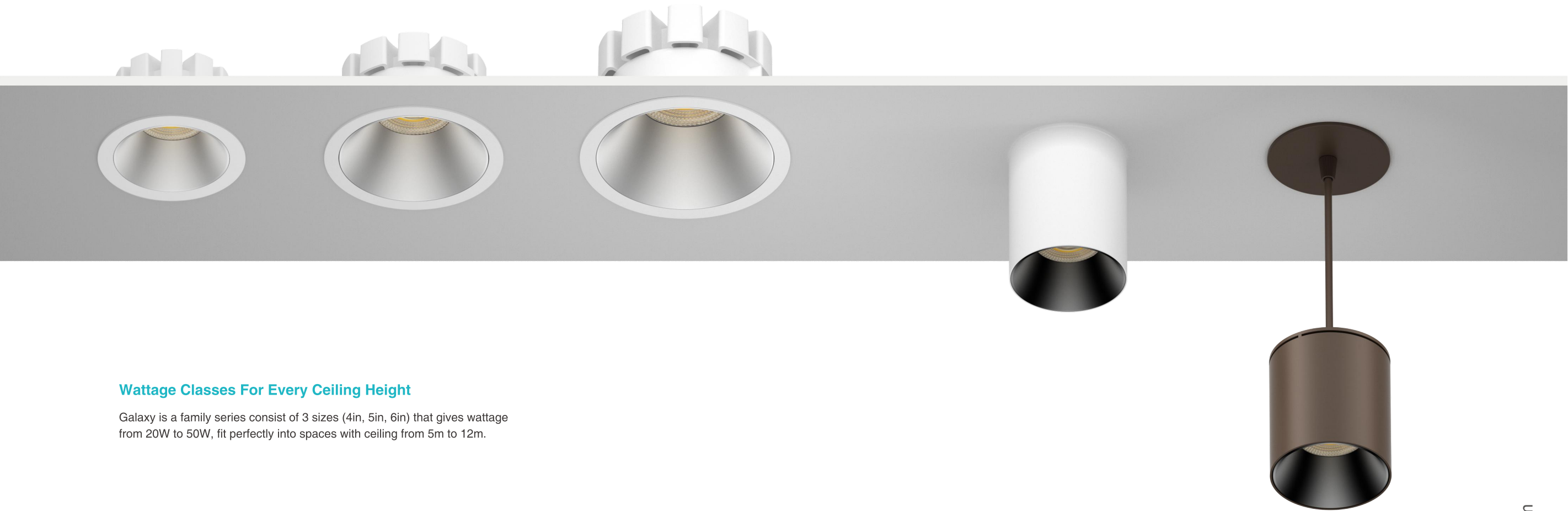




## OVERVIEW

			
Model NO.	GR100	GR125	GR150
Trim Diameter(mm)	Ø118	Ø143	Ø168
Cut-out(mm)	 100	 125	 150
Wattage & Luminous Flux	20W - 25W 1574 lm - 2598 lm	30W - 35W 2441 lm - 3622 lm	40W - 45W 3596 lm - 4298 lm
Beam Angle(°)	24° 38° 60°	24° 38° 60°	24° 38° 60°
Color Temperature	2700K, 3000K, 4000K, 5000K Tunable White(2700K-5000K)	2700K, 3000K, 4000K, 5000K Tunable White(2700K-5000K)	2700K, 3000K, 4000K, 5000K Tunable White(2700K-5000K)
Dimming Control	DALI, 0/1-10V, TRIAC, CCT Switch	DALI, 0/1-10V, TRIAC, CCT Switch	DALI, 0/1-10V, TRIAC, CCT Switch
Color Rendering Index_CRI	80+ 90+	80+ 90+	80+ 90+
Housing Color	White Black	White Black	White Black
Secondary Reflector	 Black Bright silver Matt silver Gold	 Black Bright silver Matt silver Gold	 Black Bright silver Matt silver Gold
Installation Methods			
Recessed-mounted			
Surface-mounted			
Pendant			
Ceiling Thickness	 1-20mm	 1-30mm	 1-30mm





### Wattage Classes For Every Ceiling Height

Galaxy is a family series consist of 3 sizes (4in, 5in, 6in) that gives wattage from 20W to 50W, fit perfectly into spaces with ceiling from 5m to 12m.

### Versatile Mounting Installations

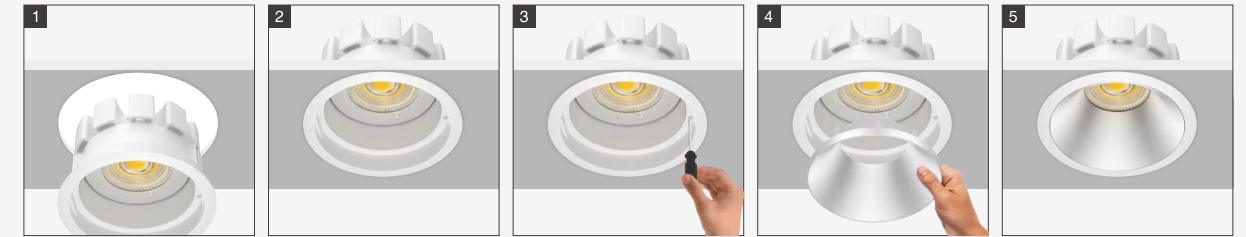
Galaxy comes with 3 mounting styles: recessed, surface-mount and pendant to be versatile enough for different needs, whilst keep uniform impression for the space.





## Installation

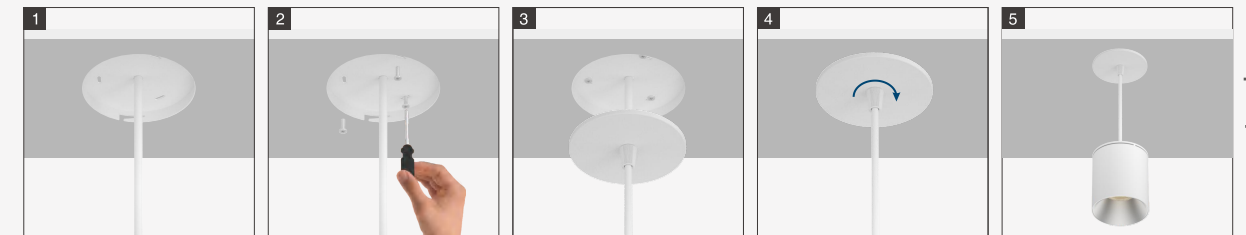
### Recessed-mounted



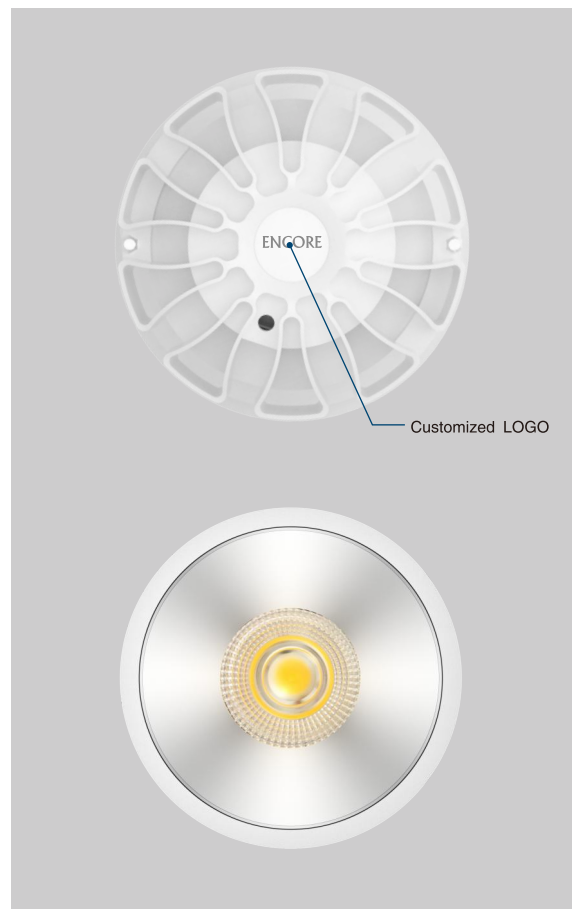
### Surface-mounted



### Pendant

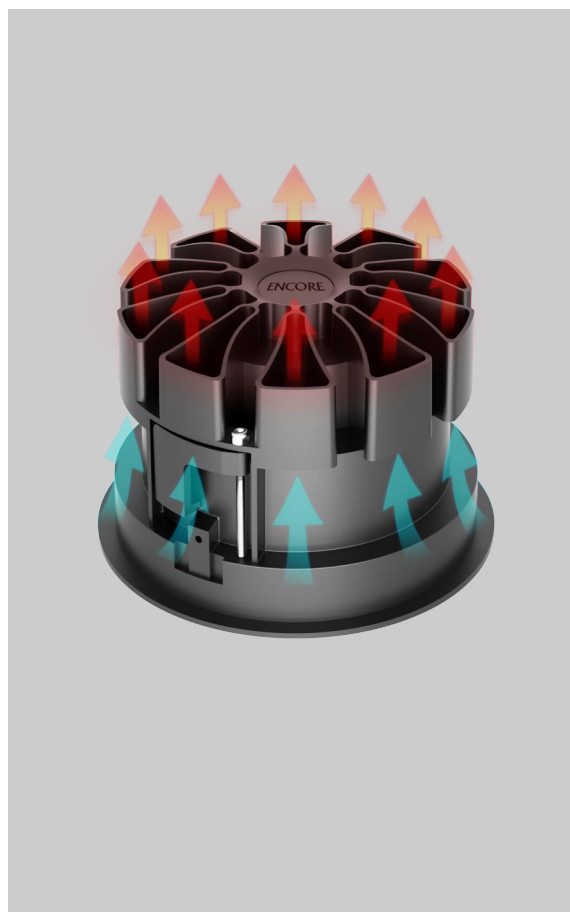






### Excellent Thermal Management

Die-cast aluminum housing with smart ventilation design provides efficient heat transfer and proprietary thermal management system.



### Customized Logo

Make Galaxy more recognizable with customized logo.



### IP54 Waterproof

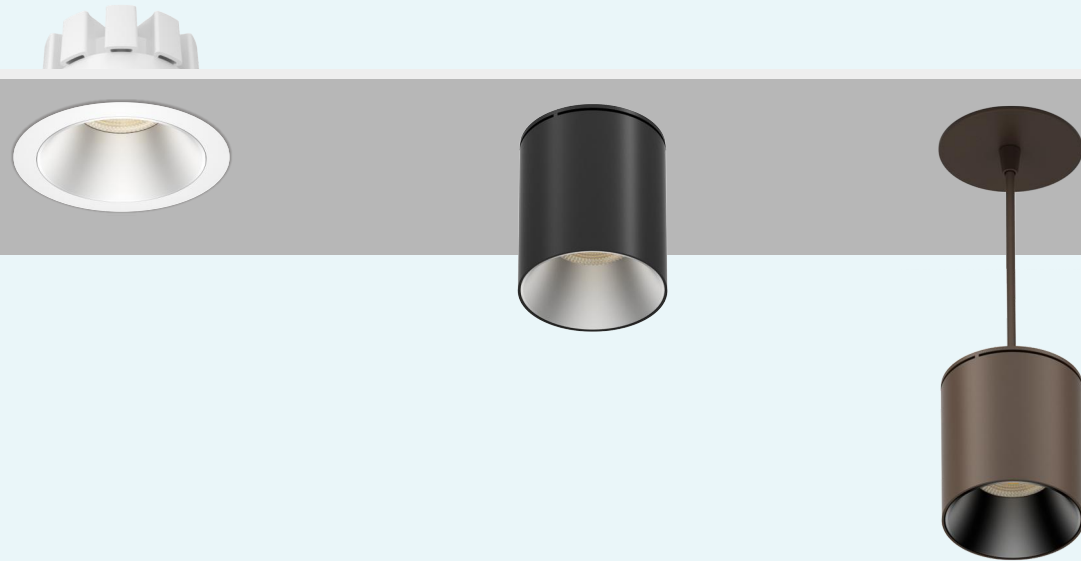
Galaxy with an extremely high IP rating IP54 are particularly suitable for the transitional areas between indoors and outdoors. In indoor areas where protection against moisture or dust is required, they ensure high-quality lighting even in harsh conditions.

### Flexible Ceiling Thickness

Galaxy with smart mounting clip that will fit ceiling thickness from 1-20mm, and mounting rod will fit 1-30mm.





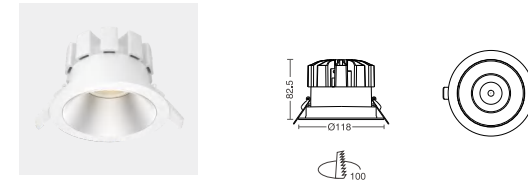


# Galaxy-GR100



- 4 inch max 25W;
- High lumen efficiency of 110lm/W;
- Tunable white allow more flexible light adjustment to match the mood;
- Low glare UGR<16 for visual comfort;
- Magnetic reflector design enable tool-free replacement without trouble in positioning;
- IP54 suitable for semi outdoor and wet areas;
- Spring clip to be flexible with ceiling thickness from 1-20mm.

### Order options



GR100

### SYSTEM POWER

20W  
25W

3000K CRI90

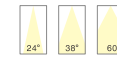
### COLOR TEMPERATURE

2700K 3000K 4000K 5000K  
Tunable White(2700K-5000K)

### COLOR RENDERING INDEX\_CRI

CRI 80  
CRI 90

### PRIMARY LENS



### DIMMING CONTROL

DALI  
0/1-10V  
Triac  
CCT Switch

### SECONDARY REFLECTOR

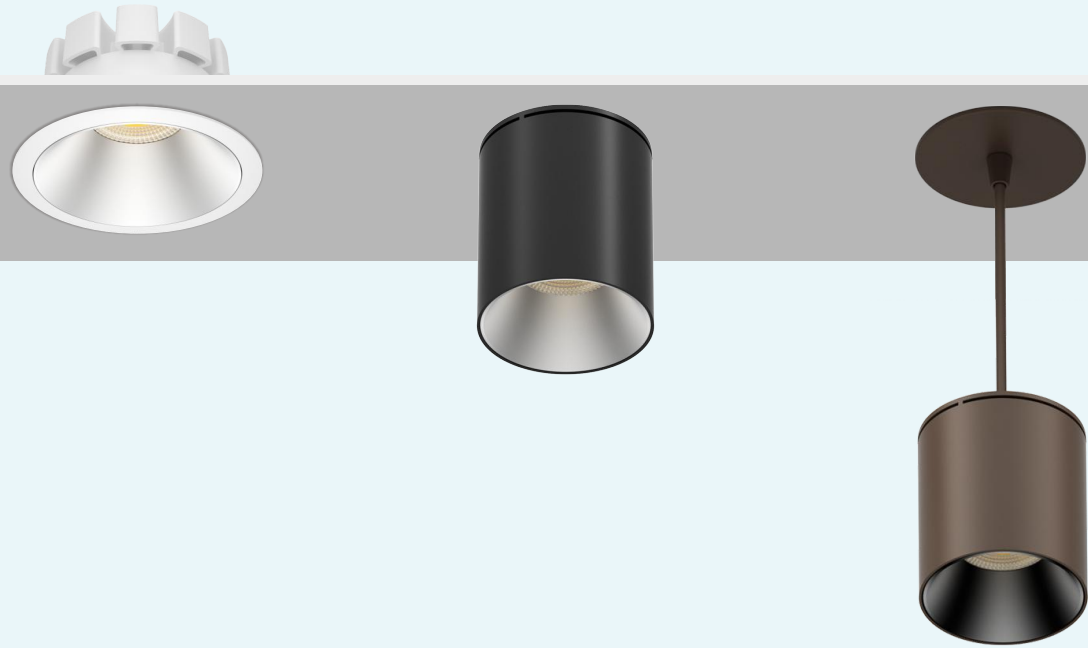


GR100-24D				GR100-38D				GR100-60D			
D(cm)	h(m)	E(lx)		D(cm)	h(m)	E(lx)		D(cm)	h(m)	E(lx)	
47,71	1	8031		82,25	1	3271		115,53	1	2096	
95,42	2	2008		160,51	2	817		231,06	2	524	
143,13	3	892		240,76	3	363		346,49	3	232	
190,84	4	501		321,01	4	204		462,13	4	131	
238,55	5	321		401,26	5	130		577,66	5	83	

Welcome to contact sales@encore-tech.com, ask the latest IES files.

Order info.	Power	Led Current	Luminous Flux(lm)	CRI	CCT	Beam Angle (°)
GR100-24D	20W	500mA	1609 lm	90+	2700K	24°
GR100-24D	20W	500mA	1694 lm	90+	3000K	24°
GR100-38D	20W	500mA	1495 lm	90+	2700K	38°
GR100-38D	20W	500mA	1574 lm	90+	3000K	38°
GR100-60D	20W	500mA	1518 lm	90+	2700K	60°
GR100-60D	20W	500mA	1598 lm	90+	3000K	60°
GR100-24D	25W	600mA	2080 lm	90+	2700K	24°
GR100-24D	25W	600mA	2190 lm	90+	3000K	24°
GR100-38D	25W	600mA	1906 lm	90+	2700K	38°
GR100-38D	25W	600mA	2007 lm	90+	3000K	38°
GR100-60D	25W	600mA	1937 lm	90+	2700K	60°
GR100-60D	25W	600mA	2039 lm	90+	3000K	60°



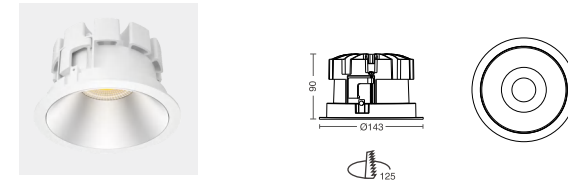


# Galaxy-GR125

	>110 lm/W	CRI 90+	CRI 80+							PF >0.90
--	-----------	---------	---------	--	--	--	--	--	--	----------

- 5 inch max 35W;
- High lumen efficiency of 110lm/W;
- Tunable white allow more flexible light adjustment to match the mood;
- Low glare UGR<16 for visual comfort;
- Magnetic reflector design enable tool-free replacement without trouble in positioning;
- IP54 suitable for semi outdoor and wet areas;
- Spring clip to be flexible with ceiling thickness from 1-30mm.

### Order options



GR125

### SYSTEM POWER

30W  
35W

3000K CRI90

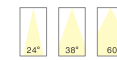
### COLOR TEMPERATURE

2700K 3000K 4000K 5000K  
Tunable White(2700K-5000K)

### COLOR RENDERING INDEX\_CRI

CRI 80  
CRI 90

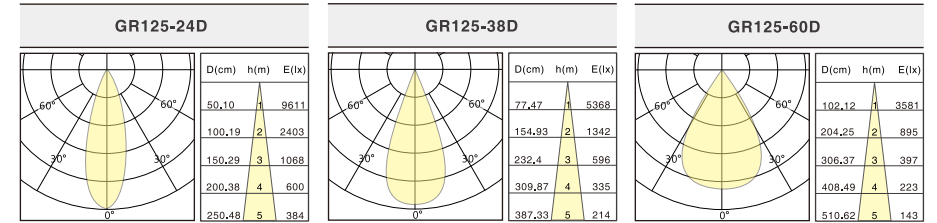
### PRIMARY LENS



### DIMMING CONTROL

DALI  
0/1-10V  
Triac  
CCT Switch

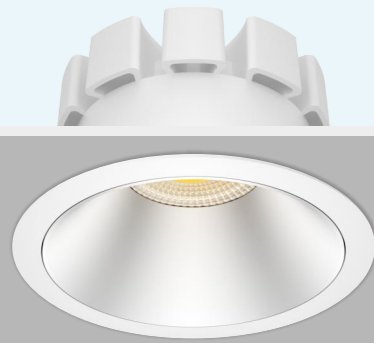
### SECONDARY REFLECTOR



Welcome to contact sales@encore-tech.com, ask the latest IES files.

Order info.	Power	Led Current	Luminous Flux(lm)	CRI	CCT	Beam Angle (°)
GR125-24D	30W	700mA	2318 lm	90+	2700K	24°
GR125-24D	30W	700mA	2441 lm	90+	3000K	24°
GR125-38D	30W	700mA	2396 lm	90+	2700K	38°
GR125-38D	30W	700mA	2523 lm	90+	3000K	38°
GR125-60D	30W	700mA	2468 lm	90+	2700K	60°
GR125-60D	30W	700mA	2598 lm	90+	3000K	60°
GR125-24D	35W	800mA	2865 lm	90+	2700K	24°
GR125-24D	35W	800mA	3016 lm	90+	3000K	24°
GR125-38D	35W	800mA	2875 lm	90+	2700K	38°
GR125-38D	35W	800mA	3027 lm	90+	3000K	38°
GR125-60D	35W	800mA	2871 lm	90+	2700K	60°
GR125-60D	35W	800mA	3023 lm	90+	3000K	60°



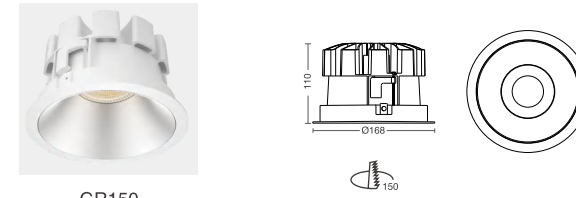


# Galaxy-GR150



- 6 inch max 45W;
- High lumen efficiency of 110lm/W;
- Tunable white allow more flexible light adjustment to match the mood;
- Low glare UGR<16 for visual comfort;
- Magnetic reflector design enable tool-free replacement without trouble in positioning;
- IP54 suitable for semi outdoor and wet areas;
- Spring clip to be flexible with ceiling thickness from 1-30mm.

### Order options



GR150

### SYSTEM POWER

40W  
45W

3000K CRI90

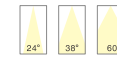
### COLOR TEMPERATURE

2700K 3000K 4000K 5000K  
Tunable White(2700K-5000K)

### COLOR RENDERING INDEX\_CRI

CRI 80  
CRI 90

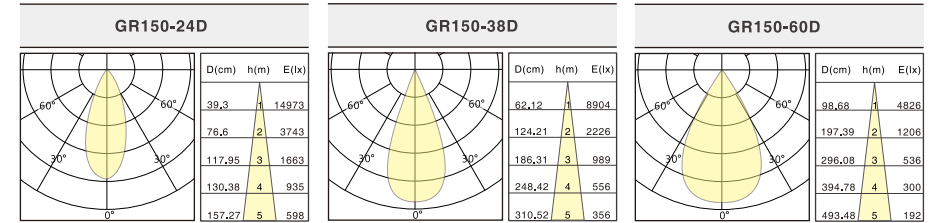
### PRIMARY LENS



### DIMMING CONTROL

DALI  
0/1-10V  
Triac  
CCT Switch

### SECONDARY REFLECTOR



Welcome to contact sales@encore-tech.com, ask the latest IES files.

Order info.	Power	Led Current	Luminous Flux(lm)	CRI	CCT	Beam Angle (°)
GR150-24D	40W	900mA	3636 lm	90+	2700K	24°
GR150-24D	40W	900mA	3828 lm	90+	3000K	24°
GR150-38D	40W	900mA	3587 lm	90+	2700K	38°
GR150-38D	40W	900mA	3776 lm	90+	3000K	38°
GR150-60D	40W	900mA	3713 lm	90+	2700K	60°
GR150-60D	40W	900mA	3909 lm	90+	3000K	60°
GR150-24D	45W	1000mA	4144 lm	90+	2700K	24°
GR150-24D	45W	1000mA	4363 lm	90+	3000K	24°
GR150-38D	45W	1000mA	4240 lm	90+	2700K	38°
GR150-38D	45W	1000mA	4464 lm	90+	3000K	38°
GR150-60D	45W	1000mA	4256 lm	90+	2700K	60°
GR150-60D	45W	1000mA	4480 lm	90+	3000K	60°





### Aesthetic Design

Galaxy is designed to be versatile enough for any tasks needed, the pendant and surface-mount version with a wide range of color options in housing and reflector, meet various aesthetic taste with details to be seen.

### Details

