



DESCRIPTION

FLEX(EN-TLF series, fixed lens version) is a slim cylinder in foldable design LED track light that will fit smoothly into any retail and gallery environments. The front deep ring can bring a good light comfort. The head can be adjusted precisely 360°+ horizontal(rotation) and 90°vertical without dead angle. The light, as a result, is emitted exactly where you need it. Support track mount and surface mount.

FEATURES

- A sleek & elegant cylinder in foldable design, concise but not simple.
- Light efficiency is up to 100lm/W.
- Interchangeable lens: 24°, 38°, 60°.
- Private-design joints can hold the track head at any positions without malfunctions.
- Smart magnet can make fixture base and driver box seamless connected.
- 360°+ rotation without dead angle and 90° vertical aiming.



DETAILS



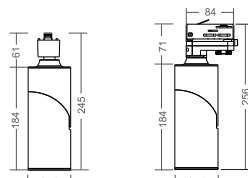
High Lumen efficiency >85lm/W      2 in 1 Foldable Design      The Magnets insidemake 2 parts sealed perfectly.

SPECIFICATION

INPUT VOLTAGE	220-240V / 100-120V / 100-277V AC, 50-60Hz
DIMMABLE	NO
INSTALLATION	On 4-pin, 3-pin or 2-pin track, surface-mounted
HOUSING COLOR	White, black, silver
OPERATING TEMPERATURE RANGE	-20--+45°C

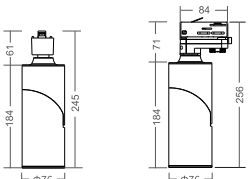
DIMENSION

EN-TLF020-21



3-pin track adaptor      4-pin track adaptor

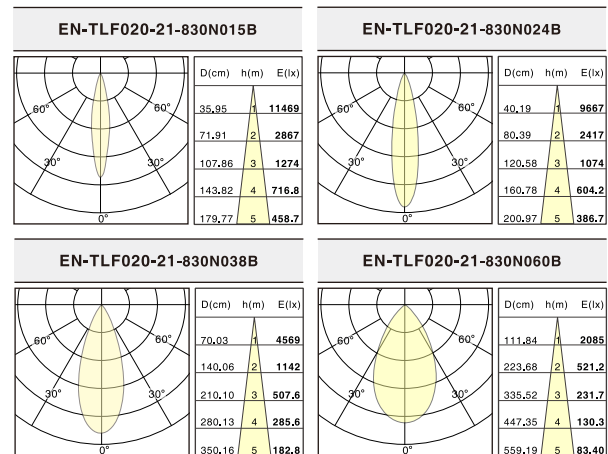
EN-TLF025-21



3-pin track adaptor      4-pin track adaptor

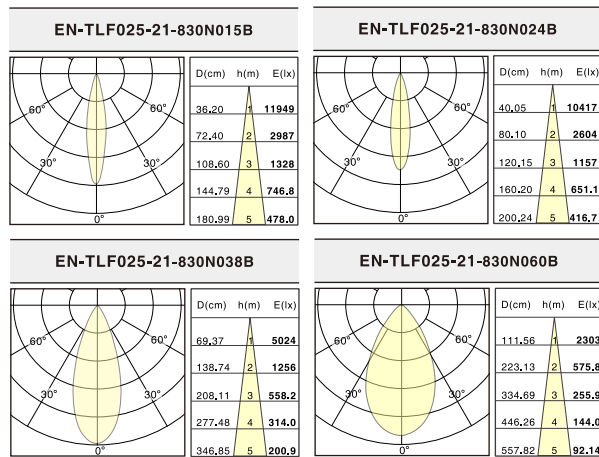
MODEL NUMBER	POWER	COLOR TEMP	LUMINOUS FLUX(Lm)±5%	LUMINOUS FLUX(Lm)	BEAM LENS
EN-TLF020-21	20W	3000K	2268lm(CRI80+)	1595lm(CRI90+)	24°
		4000K	2388lm(CRI80+)	1672lm(CRI90+)	
EN-TLF025-21	25W	3000K	2462m(CRI80+)	1723lm(CRI90+)	38°
		4000K	2580lm(CRI80+)	1086lm(CRI90+)	

LIGHT DISTRIBUTION



OPTICAL ACCESSORIES

NO



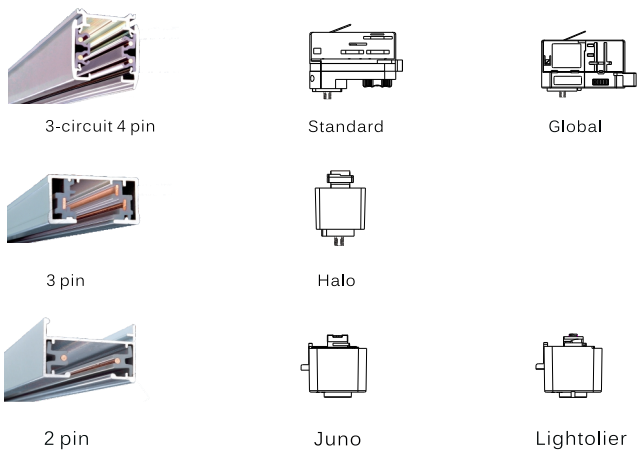
PACKAGE

Model	EN-TLF020-21 EN-TLF025-21
PCS/ Carton	12
Inner Box size(cm)	26.2*12.6*9.2
Carton size(cm)	53.4*26.2*28.6
Net weight(kg)	14.4
Gross weight(kg)	15.2



INSTALLATION

On Track



Surface-mounted



EN-TLF020/025-12